

THE RAINBOW

Box Art Group Newsletter - Friday 7th January

2022 NEW YEAR SPECIAL

Written by and for the members of Box Art Group (No. 70)

Contents

- Blake's Drawings
- Christmas Heirloom
- Watercolours
- Break Time
- The Three Intrepids
- Christmas Tree
- Bethlehem
- Advent Trail
- Break Painting
- Activities for 2022

Blake's Drawings

*Quentin Blake: "The Drawing of My Life" was made by Wingspan Productions for BBC2, produced and directed by Peter Sweasey. **Broadcast on BBC2 on Christmas Day at 4.10pm**, and for viewers in the UK it will be available on iPlayer for a further 12 months.*

This is a really engaging programme on his life and work, with contributions from his friends and contemporaries. There are some very lively drawings and you can pick up tips on representing movement in your own drawings. I recommend it to anyone who has an hour to spare and can find it on iPlayer. I am sure that you will feel happier for having seen it.

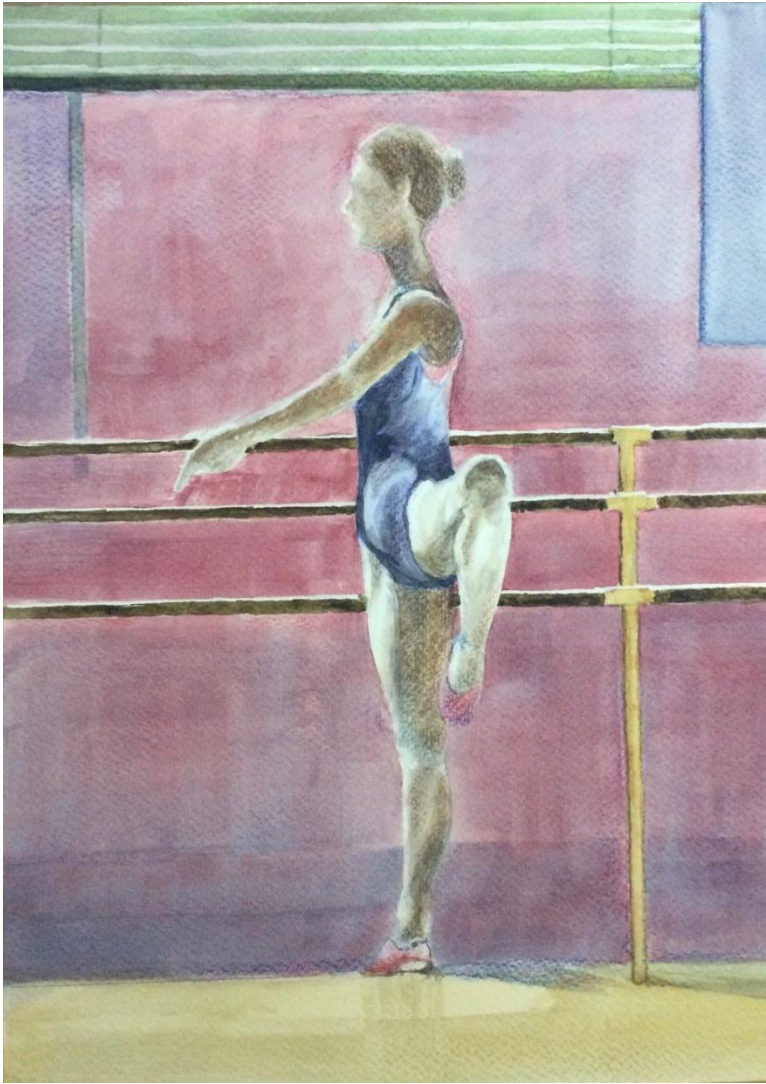
Rosemary

Christmas Heirloom

This little tree has become a family heirloom. It was purchased in 1930 so is 90 years old and has been on display every single Christmas for all that time. It is made of dyed peacock feathers and stands in a little tub made of wood. I am reliably informed that the tree cost 6d. and the tub 3d.

Hilary K

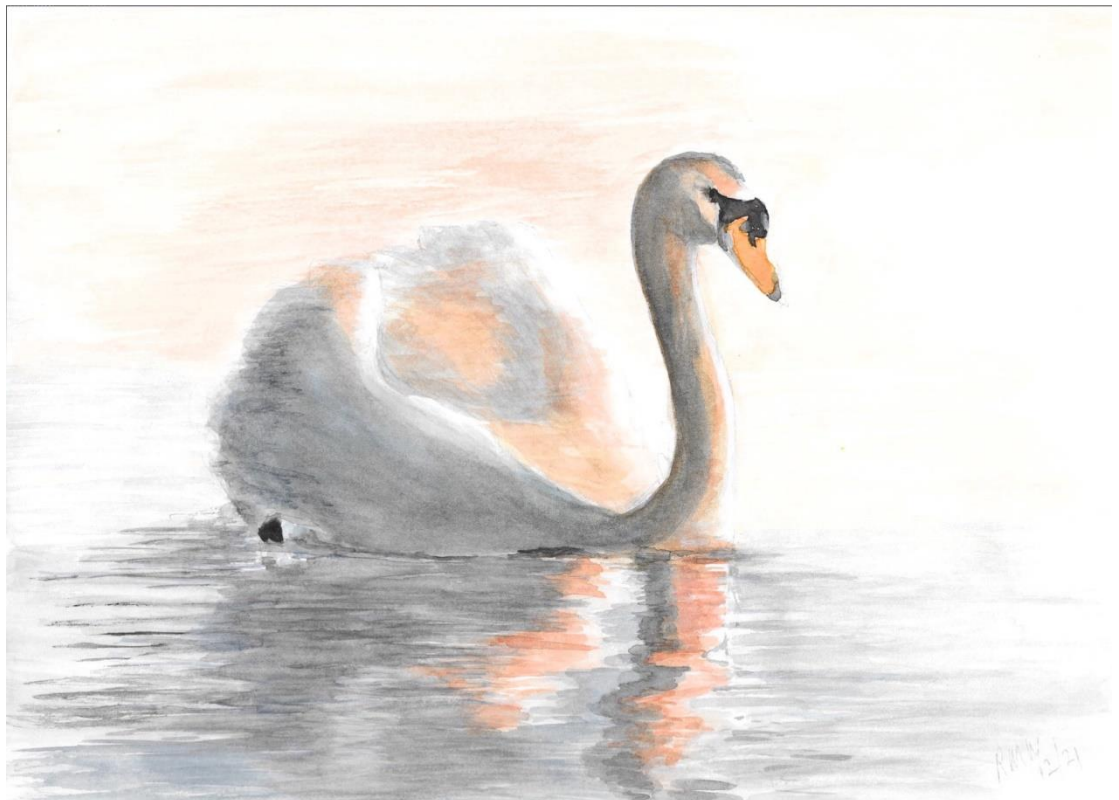




Watercolours

Two watercolour paintings- the ballerina I completed just before Christmas and I painted the swan between Christmas and the New Year.

Mick Williamson





Break Time

Here are some art works from over the Christmas Period: the first is based on a photo of a stand-in model that I took at the last Group session that I attended, the second is a portrait of my daughter, and the third one of the old nags that wander the Common in summer (from a photo). Then some digital art based on manipulations of a photo of a stained glass window from a recent visit to Cambridge, which are probably a little different to what most other members might do.

Michael McEllin





Michael McEllin





The Three Intrepids

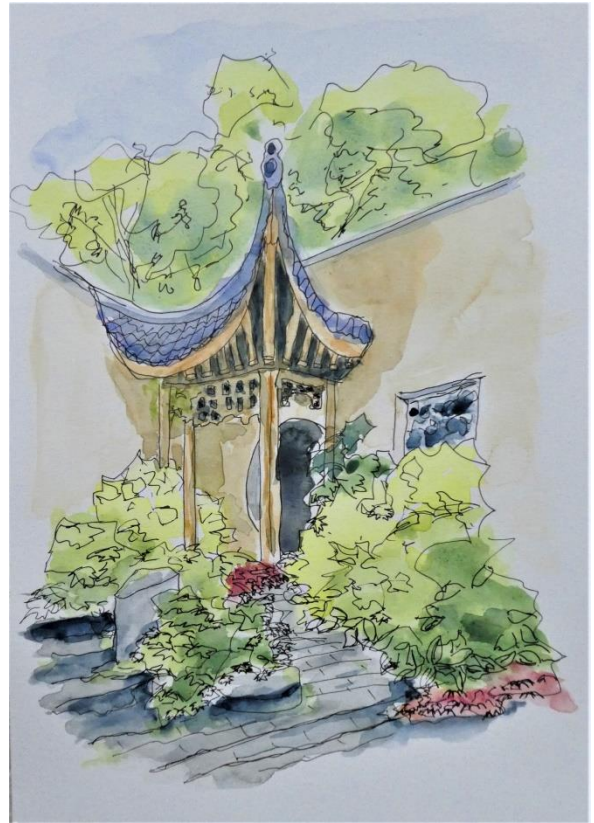
Just before Christmas, three intrepid Box Art Group members (Jackie, Lynne, and Rosemary) attended a two-day course at Three Storeys, Nailsworth, run by Vanessa Fawcett. The mysterious title was "Find your inner smile" and the idea was to encourage a freer, more abstract style of painting. One of Rosemary's efforts, and a group shot, are shown here. It was enjoyable and took all of us out of our comfort zones to discover new ways of observing and of getting started on a blank page in new ways too.

Rosemary



After the workshop with Vanessa, I did a pen and wash/Japan workshop with Max Hale at Pegasus Mill. I definitely enjoyed letting myself go that day and would do it again! Both workshops were very enjoyable; I hadn't done any for years.

Lynne F



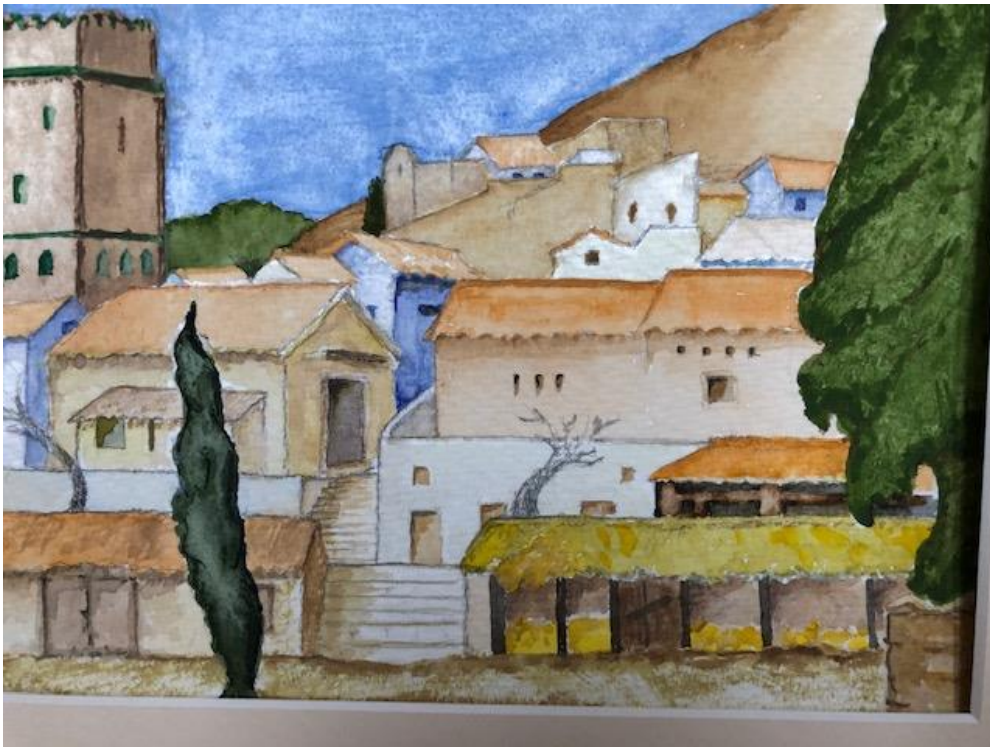
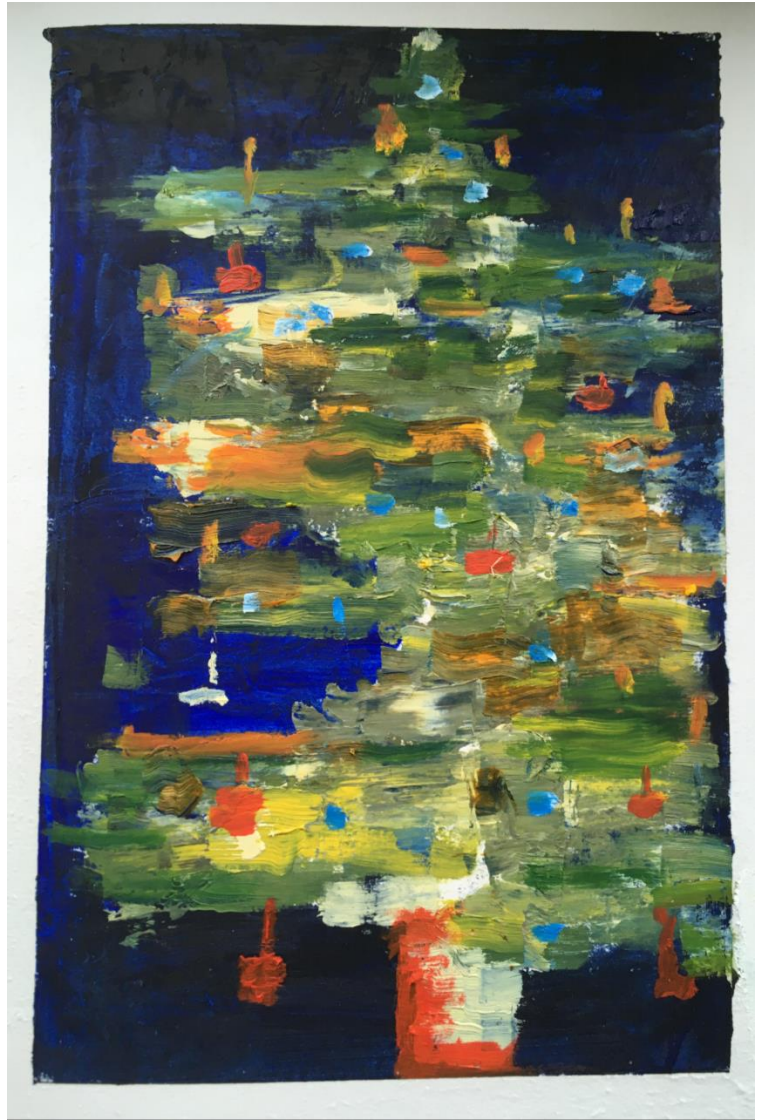
Lynne F



Christmas Tree

I started this in class and completed it Christmas Eve! It's a kind of abstract Christmas tree.

Graham S



Bethlehem

Here is a painting I finally finished over the break. As it could be Bethlehem (on a sunny day) and there are stables visible at the bottom of the little town, I used it as a backdrop to a group of Nativity figures I set out on the hearth at Christmas.

Jill F



Advent Trail

We had number 24 on our village advent trail so went over the top! It is meant to look like a painting but it was mostly illusion and took just a few evenings to do. The idea was that it looked good from a distance!

The canvas was an old one re-used, then low res images were stuck to it, painted on top with acrylic to suggest that it was all painted. I had some metal leaf left over from another project, for the halos. It was covered with a coat of varnish to keep the weather off. I made the mistake of not sealing the back of the canvas so it wrinkled when the weather was wet, which was frustrating.

It did look good lit up though....



Beth

Break Painting

Here is a watercolour I did last week without reference.

Richard B



This is the artwork image I used to create some Christmas cards to send out to family and friends. I actually drew this in the week between Xmas and New Year 2020, with the approach of 'Auld Lang Syne' in a Covid restrictions world. I set it up as a still life to work from, (pastels and pastel pencils), only having to improvise for the tea bag... *Jan*





And here's a pastel landscape from the Monsal trail in Derbyshire, completed during the break.

Pete

Activities for 2022

The first spring term session is on the afternoon of Thursday 13th January. There should be some name tags available, so please wear one, (preferably your own), and please observe the Covid rules on face coverings and hand sanitising when entering the hall and moving around.

We're trying to organise regular plein air sessions in addition to the indoor ones, and as Michael M says, "outdoors I tend to do quick pen/ink sketches so I can move around in order to keep warm!" So the times of the outdoor sessions may well be a moving feast, to dodge the worst of the weather, so check your e-mail. The characteristics I look for are parking (preferably free), interesting subjects, coffee shop, but the weather will tend to trump these. At the moment I'm looking at 10:30am Tuesday 11th January in Minchinhampton at the top of Bell Lane for an hour or two, but I'll confirm with an e-mail to the whole group on Monday.

The dates for this and the summer term are as follows:

Spring: 13 Jan - 7 April 2022 Summer: 28 April - 26 May 2022

We had planned to run plein air sessions instead of indoor sessions after 26 May, but we are investigating extending the indoor booking for 4 more weeks and running plein air sessions in parallel and to continue these as long as there's some interest.

All the best,

Pete